

THE TESTING SET AT THE TWO CNC AXES TILTING-SWIVELING MILLING HEAD HD 320-2CNC

HORGE Ioan¹, MIHAILA Ioan², GANEA Olimpiu³, GANEA Macedon⁴
1&3. Stimin Oradea, 2&4. University of Oradea,

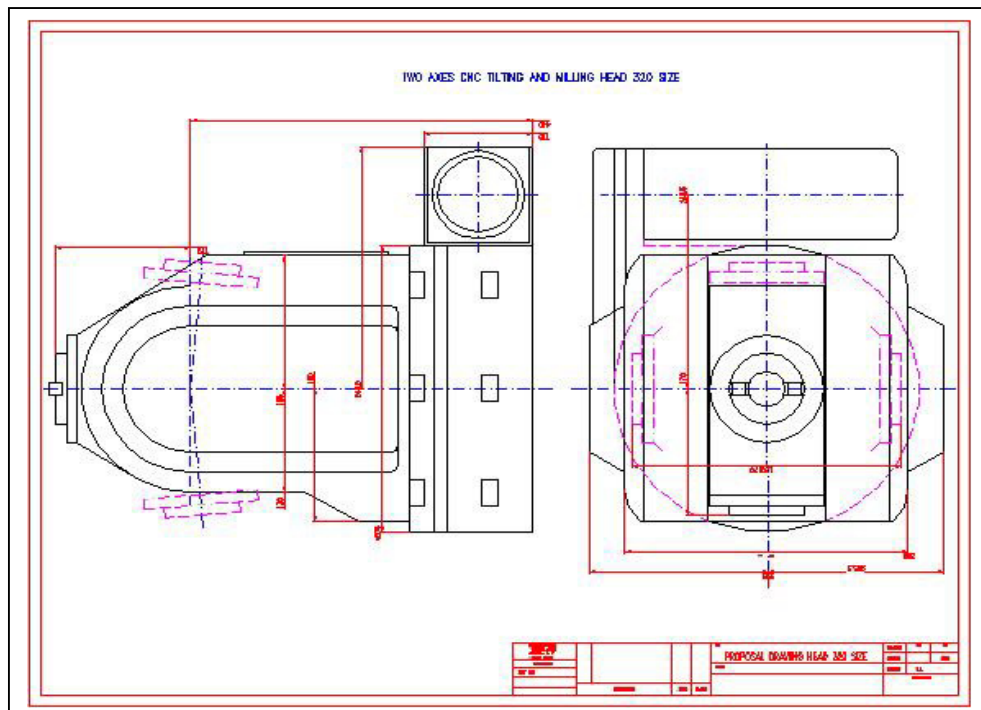
Keyword: *Head testing set.*

The Company Stimin Oradea is specialized in machine tools production, having a long tradition in Romania and produces machine tools for prismatic parts machining: milling, drilling, presses, and special machines, including here CNC machines, machining centers, flexible cells, and many others.

The representative machines are CPFPH 1000, CPFPM 1000 and others, that Stimin intend to be extended to the five axes machining concept, by owns forces. In this range, Stimin develop the modules HD 320-2CNC, and MRI 500-2CNC as independent units.

The main testing set at these modules is established according to the international standards: ISO 230-1, ISO 230-2, VDI 3441DGQ, ASME B5-52-1992, and others.

The testing set contains the checking about: the geometrical precision, the cinematic precision, the dynamic stability, the working precision, the TCPM accuracy, the load capacity, etc. The paper work presents the checking methods, the devices, the permissible values.



BIBLIOGRAPHY:

[1] – Ioan HORGE¹, Ioan MIHAILA², Olimpiu GANEA³, Macedon GANEA⁴; (1&3. eng. Stimin Oradea, PhD student, 2&4. PhD professor University of Oradea), **THE CINEMATIC CHAIN OF TWO CONTINUOUS AXES MILLING HEAD HD 320-2 CNC AT THE MACHINE “CPFPH 1000-5 axes”**,
Ses. de com. st., Univ. din Oradea, 2008